

CONIDECK®

The Perfection of Car Park Protection



 **BASF**

The Chemical Company

Your First Line of Defence

Car park surfaces are constantly exposed to aggressive chemicals as a result of oil and acids spills and carbon dioxide gases. Surface salt deposits in coastal areas where there is a saline atmosphere, climatic conditions such as humidity, rain, and the impact of de-icing salts all add up to form a corrosive environment, the effects of which will be worsened if cracks already exist in concrete decks. The use of a waterproofing protective membrane is therefore essential to reduce whole-life costs and downtime caused by the maintenance of deteriorating surfaces.

For the car park owner, maintaining a serviceable deck surface is a vital aspect of car park maintenance. A poor surface finish increases the likelihood of skids and the risk of liability in the event of end users making an insurance claim for an incident. The BASF systems all include a hard wearing, skid resistant finish thus minimising accident risks due to skidding.

The function of the systems extends beyond protection to the practical considerations of differentiation of parking bays, traffic lanes and pedestrian walkways. Varying the deck surface through the use of colours and light-reflective coatings improves the usability of the car park and increases its aesthetics, creating a safe and welcoming atmosphere.



BASF Construction Chemicals has the answer to car park protection: CONIDECK, a range of crack-bridging and non crack-bridging, wear-and-tear resistant car park deck coatings for both exposed and covered decks.

Our systems' tough wear coats provide exceptional wearing qualities, and a coloured top coat gives design flexibility.

CONIDECK car park systems are approved by the British Board of Agrément, have been independently tested to, and fulfil the requirements of the German OS-F specification for crack-bridging coating systems designed to take traffic and hold the French ATEX approval. All systems are installed by specialist contractors with the back-up of skilled BASF personnel who can assist in drawing up the right specification for every application.



Tough at the Top



One specification of product across an entire parking structure is unlikely to be the best solution for all areas. The top deck of a car park is the structure's most vulnerable surface, exposed to the elements as well as to oils, acids, salts and UV radiation. To withstand such severe conditions, heavy-duty, UV-stable, elastomeric waterproofing systems are needed.



BASF Construction Chemicals' solutions for car park top decks provide exceptional tensile strength and elastomeric capability. Double the thickness of most products, they use a multi-layer build up system to ensure optimum performance in even the harshest environments. Spray application speeds up the installation process and gives controlled thickness.



Our solvent-free polyurethane membranes can bridge cracks up to 2.5 mm in width easily and give a high level of mechanical resistance, while top coats are available in a wide range of colours.



Different Decks, Different Solutions

Enclosed, intermediate and lower decks and bays are protected from weather conditions to a large degree, and are less susceptible to stress than top decks although still exposed to aggressive de-icing salts. BASF Construction Chemicals' systems for light to medium duty operations take this into account with specific systems that are fit for purpose.



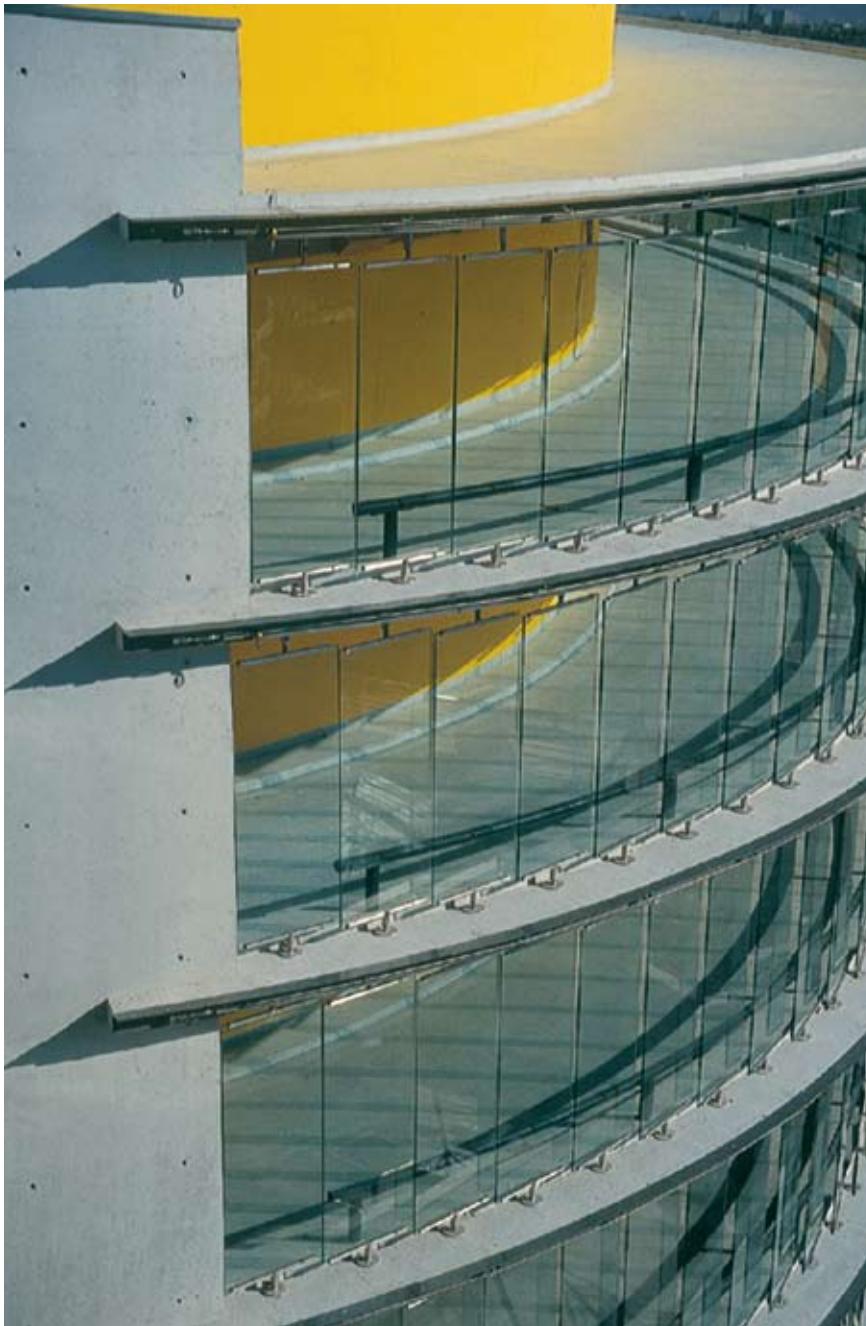
Light-reflective coatings can be applied to the walls, soffits and columns of lower decks to improve aesthetics by exploiting ambient light and headlight beams. The result: brighter and more secure car parks, and a reduced need for additional lighting installations.



For decks, top coats are available in a choice of colours, helping users to identify different areas of the car park with ease. Skid resistant finishes are available to give extra grip, reduce tyre squeal and to provide a sure footing for pedestrians.



On the Move



Turning circles and ramps are the areas that suffer the highest mechanical stress and BASF Construction Chemicals' systems have been developed to extend the surface life of these heavily used areas. A greater aggregate content in such zones increases wear resistance, producing a heavy-duty, skid resistant surface for long-term protection.

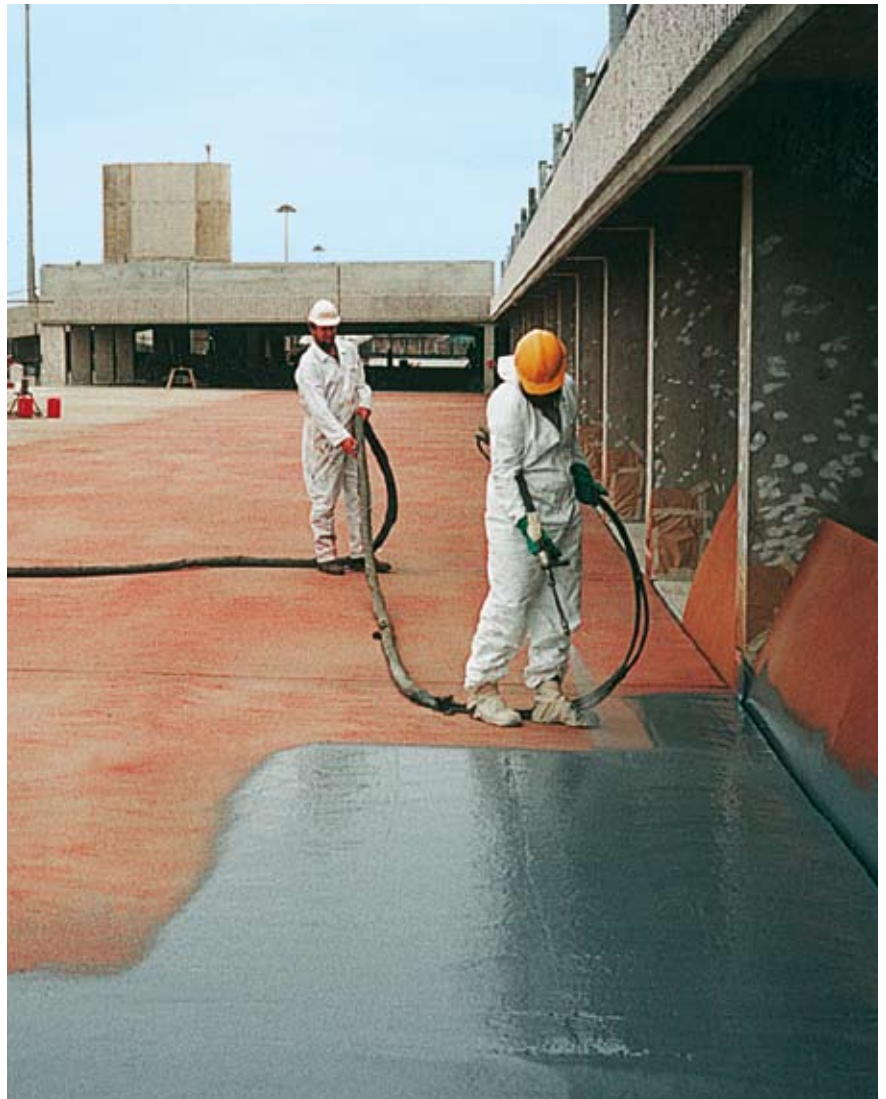
Highly elastomeric and waterproof, both spray and hand applied membranes are available providing the applicator and car park owner with the optimum system to meet specific requirements.



Make it Last

It is our goal to extend the lifespan of your structure. Our total-systems approach to construction means that we offer a full range of products, providing you with a one-stop shop for both construction and maintenance systems.

From hand applied to spray applied systems both crack-bridging and non-crack bridging for new-build projects to major refurbishments and concrete repairs, we have the solution. Beyond deck membranes, we supply joint systems and sealants for engineered traffic joints, impact protection systems and repair materials suitable not only for decks but also for soffits and overhead use.



Intelligent Solutions from BASF Construction Chemicals

Whatever your construction problem, whatever the structure is you are building, BASF Construction Chemicals has an intelligent solution to help you be more successful.

Our market leading brands offer the widest range of proven technologies to help you build a better world.

Emaco® – Concrete Repair Systems

MBrace® – Composite Strengthening Systems

Masterflow® – Precision and Structural Grouts

Masterflex® – Joint Sealants

Masterseal® – Coatings and Waterproofing

Concresive® – Resin Based Mortars, Adhesives and Injection Systems

Conica® – Sports Flooring

Conideck® – Hand and Spray Applied Waterproofing Systems

Coniroof® – PU Based Roofing Systems

Conibridge® – PU Based Membranes to Protect Bridge Decks

Mastertop® – Decorative and Industrial Flooring Solutions

Ucrete® – Flooring Solutions for Harsh Environments

PCI® – Tile Fixing, Cement Underlays and Waterproofing Systems

UNITED KINGDOM

BASF Construction Chemicals
UK Ltd.

19 Broad Ground Road
Lakeside, Redditch
Worcestershire B98 8YP

Tel. +44 161 794 7411

Fax +44 1527 503576

MIDDLE EAST

BASF Construction Chemicals
UAE LLC

Dubai Investments Park
Jebel Ali - Al Hibab Road
Jebel Ali Industrial Area
P. O. Box 37127
Dubai

Tel. +971 4 8090800

Fax +971 4 8851130

SINGAPORE

BASF Construction Chemicals
Singapore Pte. Ltd.

No. 33, Tuas Avenue 11
Singapore 639090

Tel. +65 6861 6766

Fax +65 6861 3186

HONG KONG

BASF Construction Chemicals
(Hong Kong) Ltd.

Unit 2, 20/F,
EW International Tower
120-124 Texaco Road
Tsuen Wan
New Territories, Hong Kong

Tel. +852 2407 42 91

Fax +852 2406 73 91

SHANGHAI

BASF Construction Systems
(China) Co. Ltd.

5/F, No. 25 Building
69 Guiqing Road
Caohejing Development Area
Shanghai 200233
P.R. Shanghai

Tel. +86 21 6485 33 00

Fax +86 21 6485 73 10

AUSTRALIA

BASF Construction Chemicals
Australia Pty. Ltd.

11, Stanton Road
Seven Hills, NSW 2147
Australia

Tel. +61 2 8811 4200

Fax +61 2 8811 3299

BASF is the world's leading chemical company: The Chemical Company. Its portfolio ranges from chemicals, plastics, performance products, agricultural products and fine chemicals to crude oil and natural gas. As a reliable partner to virtually all industries, BASF's intelligent system solutions and high-value products help its customers to be more successful. BASF develops new technologies and uses them to open up additional market opportunities. It combines economic success with environmental protection and social responsibility, thus contributing to a better future. BASF has approximately 95,000 employees and posted sales of more than €42.7 billion (approximately \$50.4 billion) in 2005.

Further information on BASF is available on the Internet at www.basf.com



The Chemical Company